

ABSOLUTE AUCTION

SATURDAY • OCT. 23 • 10 AM
BURNSVILLE, NC

ONSITE & ONLINE



TOTAL LIQUIDATION
WESTSIDE EQUIPMENT RENTAL

INSPECTION: FRIDAY, OCTOBER 22 • 10:00 AM – 4:00 PM

EQUIPMENT TERMS: All bidders must register and provide proper identification. All items sold "As Is Where Is" without warranty of any kind, expressed or implied. All items sell to the highest bidder with no minimum or reserve. All purchases must be paid for in full within one hour of the close of the auction on the day of sale by US funds via cash, cashier's check or certified check. All company or personal checks MUST BE ACCOMPANIED BY A LETTER FROM YOUR BANK guaranteeing payment of your check dated for this auction. NO EXCEPTIONS. We cannot accept your check without this letter. Credit cards accepted with an additional 3% service fee. **10% Buyer's Premium will be added to all high bids to determine sales price. Online Buyer's Premium is 13%.** 6.75% Sales Tax will be collected unless a Resale or Agricultural Exemption Certificate is provided at time of payment.

DISCLAIMER: Although every effort has been made to present the information contained herein clearly and accurately, please keep in mind that this brochure is only a guide. The Auction Company and its authorities make no guarantees or warranties, expressed or implied. Please make your own inspections. ALL SALES ARE FINAL. NOT RESPONSIBLE FOR ACCIDENTS.

KING
AUCTION & REALTY CO., Inc.

P.O. Box 800 • Fletcher, NC 28732

(800) 359-5608

NC Firm Lics. #7551



FIRST CLASS MAIL
TIME SENSITIVE
DATED MATERIAL

www.bidkingauctions.com

For more information call Jerry King 828-230-7075

NATIONWIDE COMMERCIAL & INDUSTRIAL AUCTION COMPANY • WESTSIDE EQUIPMENT RENTAL

ONSITE & ONLINE ABSOLUTE

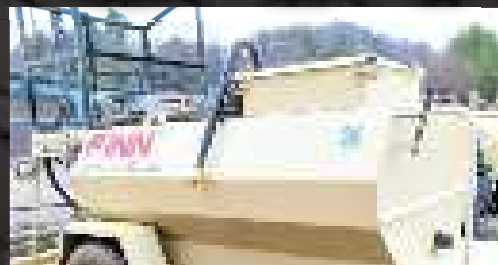
AUCTION



(21) EQUIPMENT TRAILERS



2018 TORO MBTX 2500 TRACK MUD BUGGY



2019 FINN T60 HYDROSEEDER

KING
AUCTION & REALTY CO., Inc.

(800) 359-5608

www.bidkingauctions.com

TOTAL LIQUIDATION OF WESTSIDE EQUIPMENT RENTAL

NATIONWIDE COMMERCIAL & INDUSTRIAL AUCTION COMPANY • WESTSIDE EQUIPMENT RENTAL

ONSITE & ONLINE ABSOLUTE

AUCTION

TOTAL LIQUIDATION
WESTSIDE EQUIPMENT RENTAL

SAT • OCTOBER 23 • 10 AM

LOCATION & ADDRESS: 550E U.S. 19E, BURNSVILLE, NC 28714



(1 OF 2) 2020 VERMEER BC 1000 CHIPPERS



(3 OF 5) 2020 JOHN DEERE 317G SKID STEER LOADERS

CAN'T MAKE IT TO THE AUCTION?

proxibid



2016 KUBOTA B26 LOADER BACKHOE



(1 OF 3) 2020 JOHN DEERE 35G EXCAVATOR

EXCAVATORS • SKID STEER LOADERS • MINI SKID STEERS & BACKHOE • TELEHANDLERS • CHIPPERS • COMPRESSORS • LIGHT TOWERS
SCISSOR LIFTS • EQUIP. TRAILERS • HYDRO SEEDERS • POST LIFT • SHOP EQUIP. • MIXERS • TROWLING MACHINES • TOOLS & MUCH MORE

THIS IS A VERY LARGE AUCTION — DON'T MISS THIS AUCTION!

KING
AUCTION & REALTY CO., Inc.

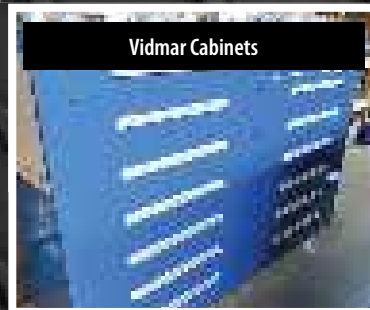
JERRY KING • 828-230-7075 • NC Firm Lics. #7551

(800) 359-5608

www.bidkingauctions.com

ABSOLUTE AUCTION

OCT 23
10 AM



Vidmar Cabinets



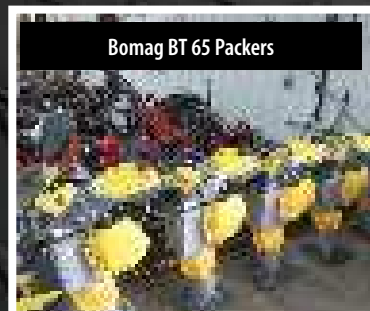
Stinger & Classen Aerators



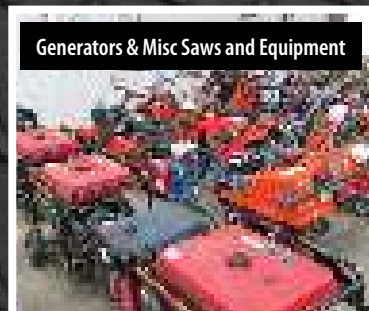
Large Quantity of Scaffolding & Walkboards



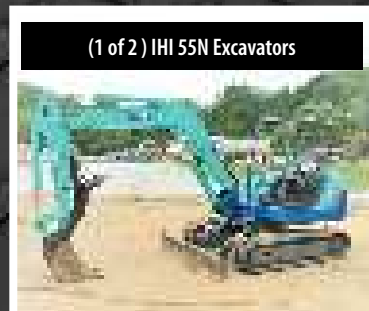
(8) Scissor Lifts



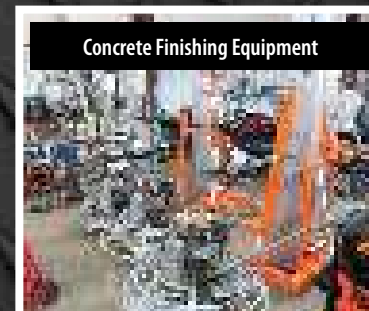
Bomag BT 65 Packers



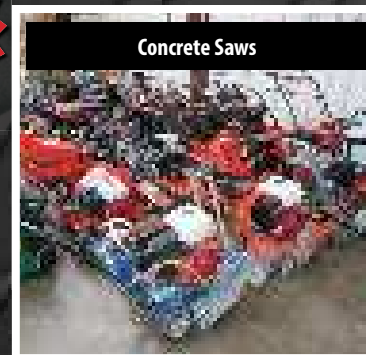
Generators & Misc Saws and Equipment



(1 of 2) IHI 55N Excavators



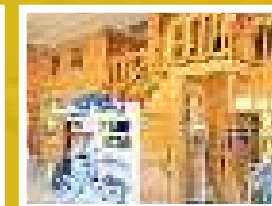
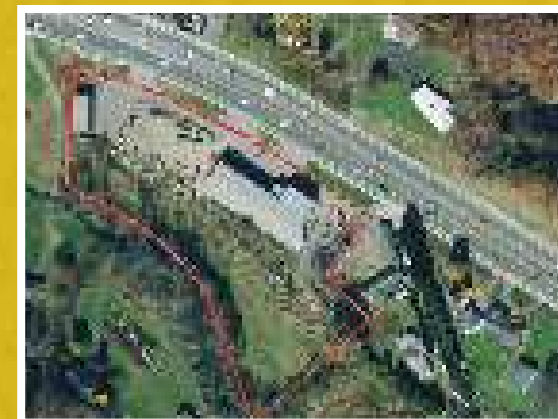
Concrete Finishing Equipment



Concrete Saws



2 JLG G5-18A Telehandlers



REAL ESTATE

* To be sold subject to seller's confirmation.

15,240 SQ. FT. COMMERCIAL BUILDING

- 4.8 ACRES
- CITY WATER – SEWER – NATURAL GAS
- WITH ADDITIONAL 3 BAY 2000 SQ. FT. METAL BUILDING
- PRIME HIGHWAY FRONTAGE ON U.S. HWY. 19E
- LOCATED OUTSIDE OF CITY LIMITS
- FINISHED UPSTAIRS OFFICES
- FORMER AUTOMOTIVE DEALERSHIP FACILITY

TO INSPECT REAL ESTATE, CONTACT JERRY KING AT 828-230-7075. SHOWN BY APPOINTMENT ONLY.

PARTIAL LISTING...

(17) EXCAVATORS

- (3) 2020 JOHN DEERE 35G EXCAVATORS, S/N XTKK288853, 740 Hrs.; S/N XKKK288855, 825 Hrs.; S/N XLKK288521, 890 Hrs.
- 2018 KUBOTA KX033 EXCAVATOR, S/N 12493, 1771 Hrs.
- 2015 KUBOTA KX91 EXCAVATOR, S/N A3888, New Engine, Meter-745 Hrs. Meter Replace at 1200 Hrs.
- 2015 KUBOTA KU08 EXCAVATOR, S/N 40997, 860 Hrs.
- 2015 KUBOTA KU17 EXCAVATOR, S/N 157K324, 1940 Hrs.
- 2015 KUBOTA KX95 EXCAVATOR, S/N A3891, 2380 Hrs.
- 2015 KUBOTA KX71 EXCAVATOR, S/N 21141, 2355 Hrs.
- 2015 KUBOTA 55N EXCAVATOR, S/N WP003627
- (2) 2014 TAKEUCHI TB228 EXCAVATORS, S/N 122803728, 1650 Hrs.; S/N 122803729, 2705 Hrs.
- (2) 2013 TAKEUCHI TB16R EXCAVATORS, S/N 116116403, 2070 Hrs.; 116116365, 2510 Hrs.
- 2015 IHI 55N3 EXCAVATOR S/N WP003627, 2870 Hrs
- 2008 IHI 55N EXCAVATOR, S/N WP001273, 4370 Hrs.
- 2008 IHI 35N EXCAVATOR, S/N WM002566, 4560 Hrs.

(7) SKID STEER LOADERS

- (5) 2020 JOHN DEERE 317G SKID STEER LOADERS, S/N JLLJ388298, 385 Hrs.; JLKJ358106, 625 Hrs.; JCHJ308957, 1265 Hrs.; JLHJ306981, 1257 Hrs., New Engine & JLLJ388282, 525 Hrs.
- 2004 BOBCAT S160 SKID STEER LOADER, S/N 526715503, 2990 Hrs.
- 1998 BOBCAT 763 SKID STEER LOADER, S/N 512229507, 2900 Hrs.
- LOADER BACKHOE
- 2016 KUBOTA B26 LOADER BACKHOE
- MINI SKID STEERS
- 2020 VERMEER CTX100 MINI SKID STEER LOADER, S/N 1VRZD80H5K1001900, 580 Hrs.
- 2014 VERMEER S800TX MINI SKID STEER LOADER, S/N 1VR3V70A5D1000957, 475 Hrs.
- TELEHANDLERS
- 2019 JLG G5-18A TELEHANDLER, S/N 0160091013 275 Hrs.
- 2016 JLG G5-18A TELEHANDLER, S/N 0160078281, 655 Hrs.
- (3) CHIPPERS
- (2) 2020 VERMEER BC 1000 CHIPPERS, S/N 1VR411190L1031993, 425 Hrs.; S/N 1VRY11192L1032093, 450 Hrs.
- 2010 VERMEER BC1000 CHIPPER, S/N 1VRY1119391011682, 685 Hrs., New Engine @500 Hrs.

COMPRESSORS

- 2020 DOOSAN C185 COMPRESSOR, S/N 498960UEAEG87, 120 Hrs.
- 2007 KAESER 210 CFM COMPRESSOR, S/N 1346, 1475 Hrs.
- MANLIFTS
- 2015 BIL-JAX 4527A MAN LIFT, S/N 5CUAJ2010FA000243
- 2012 BIL-JAX 4527A MAN LIFT, S/N 45A12-000169

LIGHT TOWERS

- (2) 2015 WACKER NEUSON LIGHT TOWERS, S/N 5FXLN0511FN004016, 3484 Hrs. & 5FXLN0515FN002270, 1975 Hrs.

TRACK TRENCHERS

- 2015 BARRETO 2024TK TRACK TRENCHER, S/N TK1090
- 2014 BARRETO 2024TK TRACK TRENCHER, S/N TK1084

(8) SCISSOR LIFTS

- (2) 2018 JLG 1930ES SCISSOR LIFTS, S/N M200023755 & M200024310
- (2) 2018 JLG 1930 R SCISSOR LIFTS, S/N M200025960 & M200025961
- (2) 2011 GENIE GS1930 SCISSOR LIFTS, S/N 084804 & 93945
- (2) 2007 GENIE GS1930 SCISSOR LIFTS, S/N 7B-84804 & 091986

SHOP EQUIPMENT

- BEND PAK 20,000# 4-Post Drive-On Lift
- BEND PAK 12,000# 4-Post Drive-On Lift
- FORD ROTUNDA 2-Post Vehicle Lift
- HUNTER TC3250 Tire Changer
- MISCELLANEOUS EQUIPMENT
- 2019 FINN T60 HYDRO SEEDER, S/N MB-2778
- 2019 FINN B40 STRAW BLOWER, S/N M4B-2643
- 2018 BOMAG BMP8500 TRACK PACKER, S/N 101720128912
- 2019 BARRETO 1320 TILLER HYDRAULIC, S/N 16585
- 2017 BARRETO 30SG STUMP GRINDER, S/N SG0920
- (3) CROWN 6 Cu. Ft. Concrete Mixers
- (2) TK 6 Cu. Ft. Mortar Mixers
- (2) ORECK AHRC663 Track Flail Mowers
- (6) 2020 IRON & OAK 24-Ton Wood splitters
- 2018 TORO MBTX 2500 TRACK MUD BUGGY, S/N 400349083
- (21) TRAILERS
- 2021 KAUFMAN 20' HD EQUIPMENT TRAILER, 8.5 Ton, VIN 003082
- (2) 2020 KAUFMAN 20' HD EQUIPMENT TRAILERS, 8.5 Ton, VIN 001004 & 001066

TOTAL LIQUIDATION
WESTSIDE EQUIPMENT RENTAL

- (2) 2021 HUDSON 18' METAL TILT EQUIPMENT TRAILERS, 5-Ton, VIN 000020 & 000021
- (3) 2020 HUDSON 18' METAL TILT EQUIPMENT TRAILERS, 5-Ton, VIN 000009, 000022 & 000008
- (4) 2016 HUDSON 18' METAL TILT EQUIPMENT TRAILERS, 5-Ton, VIN 000027, 000081, 000082 & 000026
- 2006 HOMEMADE 12' EQUIPMENT TRAILER, 5-Ton, VIN NCX1127659
- 2001 JIM CAMPEN 16' EQUIPMENT TRAILER, 5-Ton, VIN #164002
- 1998 JIM CAMPEN 16' EQUIPMENT TRAILER, 5-Ton, VIN #164002
- 1997 HOMEMADE 12' EQUIPMENT TRAILER, 5-Ton, VIN #NCX01008018
- (2) 2002 HOMEMADE 16' EQUIPMENT TRAILERS, 5-Ton, VIN #NCX1081171 & NCX1081170
- 1997 LANDAL 16' EQUIPMENT TRAILER, 5-Ton, VIN #V01016882
- 2006 PROH 14' EQUIPMENT TRAILER, 4-TON, FIN #563233

REAL ESTATE TERMS

* To be sold subject to seller's confirmation.

BUYER'S PREMIUM: A 10% Buyer's Premium will be added to high bids to determine contract sales price.

DOWN PAYMENT: A 10% deposit on the day of auction is required. The deposit may be made in the form of cash, cashier's check, personal check or corporate check. Your bidding is not conditional upon financing, so be sure that you have arranged financing, if needed, and are capable of paying cash at closing on or before 30 days.

PURCHASE AGREEMENT: The successful bidder will be required to enter into a purchase agreement at the auction site immediately following the auction.

POSSESSION: Possession is at closing, which shall take place within 30 days of the auction.

PROPERTY INSPECTION: Each potential bidder is responsible for conducting, at their own risk, their own independent inspections, inquiries and due diligence concerning the property.

1995 MOBILE MANUFACTURING 4'X8' METAL TRAILER, VIN #319166

- MISC. TOOLS & SMALL EQUIPMENT
- (4) HILTI Breaker Hammers, (8) HILTI Hammer Drills, (3) HILTI 27 Cal. Powder Accuated Driven Drills,
- (2) BOSCH Breaker Hammers, (6) ESSEX Floor Sanders, (3) ESSEX Floor Edgers, (5) BOMAG Compactors, (7) BOMAG Plate Compactors, (6) HONDA Tillers, (3) NORTON & PRO-CUT Floor Saws, (3) HUSQVARNA Walk-Behind Core Plug Aerators, 2017 CLAUSEN Stand-On Aerator, S/N SA300090, 2020 STINGER Stand-On Aerator-Overseeder, (3) HUSQVARNA Overseeder, HUSQVARNA Stump

- Grinder, E-Z TRENCH Fence Trencher, (2) COLEMAN Generators, (6) MI-T-M Generators, (6) Floor Buffers, (4) MI-T-M Cold Water Washer, (2) HUSQVARNA Cold Water Washers, (6) Wheelbarrow Air Compressors, (6) BOSTITCH Flooring Staplers, (3) CST – Berger Builders Levels, MAKITA 16" Log Saw, Compound Sliding Miter Saw, Angle Drills, Metal Nibbler, Screw Guns, Drywall Machines, Roofing Guns, (2) PASCODE Finish Nail Guns, (2) KOBALT Electric Mortar Mixers, Water Pumps, Concrete Trowel Machine, Dehumidifiers, Floor Fans, Shop Tools, Weed Eaters, Cut-Off Saws, Hedge Trimmers, Augers, Hand Tools, Drywall Lifts, 10" Tile Saws, Crank Lifts, Sod Cutter, Shop Tool Boxes, (3) Mobile Air Conditioning Units,

PLUS MUCH MORE!

CAN'T MAKE IT TO THE AUCTION?

proxibid

KING
AUCTION & REALTY CO., Inc.

JERRY KING • 828-230-7075
NC Firm Lics. #7551

www.bidkingauctions.com • (800) 359-5608

ALL EQUIPMENT SELLS AT ABSOLUTE AUCTION!