

# ABSOLUTE RETIREMENT AUCTION

SATURDAY, SEPTEMBER 21 – 10:00 A.M.



JOHN DEERE 750B



JOHN DEERE 450C TRACK LOADER



1995 DODGE 2500

ANCHOR STEAM POWER CO., INC. - ASHEVILLE, NC



2004 CEDAR CREEK SILVERBACK (ONE OWNER)



PROWLER REGAL MDL. 29L



(1 OF 4) CATERPILLAR FORKLIFTS



MOBARK 1050 TUB GRINDER



(7) TRAILER MOUNTED WELDERS



AIR COMPRESSORS



PALLETS OF WELDING WIRE & ROD

AUCTION LOCATION: On the premises of Anchor Steam Power Co., Inc., 80 Azalea Road E., Asheville, NC 28805



2008 FORD F-350 KING RANCH



1985 PETERBILT 359



1974 FORD F-350 FLATBED

CAN'T MAKE IT TO THE AUCTION? BID ON PROXIBID, BIDSPOTTER OR EQUIPMENTFACTS

proxibid BidSpotter Equipmentfacts

**KING**  
AUCTION & REALTY CO., Inc.

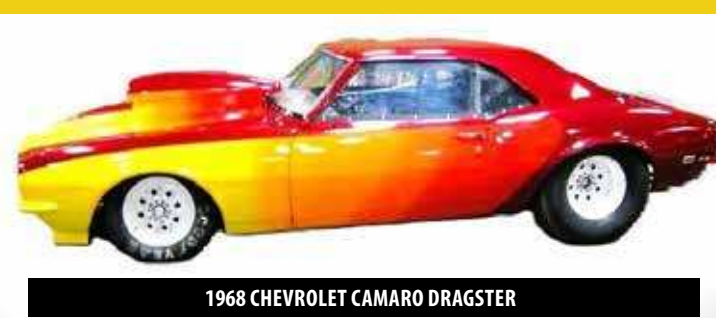
JERRY KING • 828-230-7075  
NC FIRM LICs. #7551

www.bidkingauctions.com • (800) 359-5608

# Absolute Retirement AUCTION

SATURDAY • SEPT 21 • 10 AM  
ASHEVILLE, NORTH CAROLINA

ONSITE & ONLINE



1968 CHEVROLET CAMARO DRAGSTER

VERY LARGE AUCTION, MANY ITEMS  
WILL BE SOLD BY THE PALLET.

FOR MORE INFORMATION, CALL JERRY KING 828-230-7075

# Absolute Retirement AUCTION



SATURDAY, SEPTEMBER 21 – 10:00 AM

ANCHOR STEAM POWER CO., INC. - ASHEVILLE, NC



2013 OPEN RANGE ROAMER 5TH WHEEL



2001 CATERPILLAR TH83 TELEHANDLER



1986 FREIGHTLINER

(800) 359-5608

**KING**  
AUCTION & REALTY CO., Inc.

JERRY KING • 828-230-7075 • NC FIRM LICs. #7551

www.bidkingauctions.com

(800) 359-5608

www.bidkingauctions.com

**KING**  
AUCTION & REALTY CO., Inc.  
P.O. Box 800 • Fletcher, NC 28732  
Auctioneer: Jerry E. King NC LIC # 1010  
NC Firm Lic. #7551



PRESORTED  
FIRST-CLASS MAIL  
U.S. POSTAGE PAID  
KOKOMO, IN  
PERMIT #154  
FIRST CLASS MAIL  
TIME SENSITIVE  
DATED MATERIAL

# Absolute Retirement AUCTION

ONE  
OWNER



SATURDAY, SEPTEMBER 21 – 10:00 AM

ANCHOR STEAM POWER CO., INC. - ASHEVILLE, NC

ROAD TRACTORS – DUMP TRUCKS – CONSTRUCTION EQUIPMENT  
WELDERS – TOOLS – HORSE-DRAWN EQUIPMENT – RACE CAR

After 38 years, Mr. Ross Austin has commissioned King Auction & Realty Co., Inc. to conduct an absolute retirement auction of Anchor Steam Power Co., Inc., Boiler & Piping Contractor, plus his personal collection of horse-drawn equipment and his race car.

LOCATION: On the premises of Anchor Steam Power Co., Inc.,  
80 Azalea Road E., Asheville, NC 28805.



1986 FREIGHTLINER - 2018 ITI CHIP TRAILER



CUSTOM BUILT STAGECOACH



FIAT-ALLIS 65B MOTORGRADER



1989 FREIGHTLINER COE ROAD TRACTOR

ONSITE & ONLINE

(800) 359-5608

**KING**  
AUCTION & REALTY CO., Inc.

JERRY KING • 828-230-7075 • NC FIRM LICs. #7551

www.bidkingauctions.com

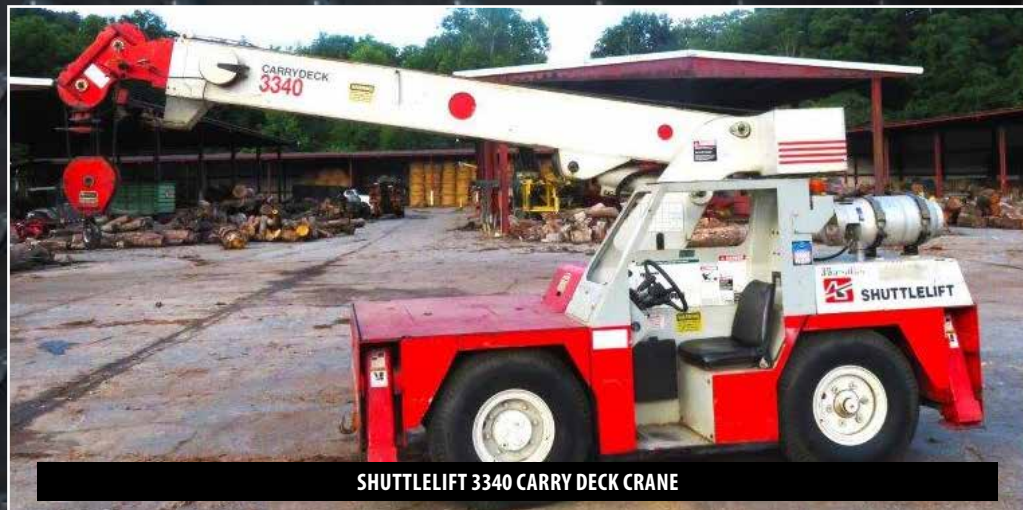


# ABSOLUTE RETIREMENT AUCTION

## SATURDAY, SEPTEMBER 21 – 10:00 A.M.



1991 FORD LTL9000 DAY CAB



SHUTTLELIFT 3340 CARRY DECK CRANE

### PARTIAL LISTING...

#### ROAD TRACTORS

2005 FREIGHTLINER Business Class M2 Flatbed, 18' (Steel Checker Plate) Mercedes Diesel Engine, 5-Spd. Transmission

1991 FORD LTL 9000 Road Tractor T/A, Cat. 3406 Diesel Engine, 13-Spd. Trans., Wet Line Kit, Jake Brake

1986 FREIGHTLINER Cat. 3406 Diesel Engine, Fuller 9-Spd., Trans., Wet Line Kit, Auxiliary Air Line, Sleeper

1985 PETERBILT Cat 3406 Diesel Engine, Spicer 5x4 Trans., Air Ride Suspension, Wet Line Kit, Jake Brake, Sleeper

1989 FREIGHTLINER COE, 444 Cummins Engine, Eaton 13-Spd. Trans., Air ride, Jake Brake (Custom Ordered)

1981 FORD 9000 S/A Road Tractor, 671 Detroit Diesel Engine, Fuller 10-Spd. Road Ranger Trans.

1987 FORD S/A Road Tractor, Cat. 3208 Diesel Engine (NonTurbo) 5-Spd. Trans., 2-Spd. Axle

#### DUMP TRUCKS – WATER TRUCK – TRUCKS

1985 Ford 9000 T/A Dump, 350 Cummins Diesel Engine, 13-Spd. Trans., 16' Big Ox Dump, Hendrickson Suspension, Jake Brake

1993 FORD F-700 S/A Dump, Landscaping Bed, Electric Hoist, Double Barn Doors, 429 V8 Gas Engine, Fuel Injection, 5-Spd. Trans., 2-Spd. Axle

1994 FORD F-700 S/A Dump, V8 Gas Engine, 5-Spd. Trans., 2-Spd. Axle

1996 FORD F-700 Water Truck, 2000-Gal. Capacity w/ Sprayer, V8 Gas Engine, 5-Spd. Trans., 2-Spd. Axle

#### BOOM TRUCK & CRANE – FORKLIFTS

1995 FORD F-800 Boom Truck w/JLG Mdl. 1410 JBT Boom, Cummins 5.9 Diesel Engine, 5-Spd. Trans., 2-Spd. Axle, 24,400 Miles (One Owner; Bought New)

SHUTTLE LIFT Mdl. 3340 Carry Deck Crane, 18,000 Lb. Cap., 1795 Hours

CATERPILLAR VC 60 D Forklift, 6,000 Lb. Cap., Triple Stage Mast, Gas Engine, Dual Wheels (One Owner)

CATERPILLAR V60D Forklift, 6000 Lb. Cap., Dsl. Eng – Triple Stage Mast -Side Shift & Clamp 7554 HRS.

CATERPILAR GP25 Forklift, 5000 Lb. Cap LP Gas Eng. 4299 Hours

CATERPILLAR V50D Forklift, 5000 Lb. Cap. Triple Stage Mast, LP Gas Engine, 4586 Hours, S/N 3E007388 (One Owner)

SKYJACK Mdl. 4626 Electric Scissor Lift

SKYJACK Mdl. 3219 Electric Scissor Lift

#### TRUCKS

2008 FORD F-350 King Ranch Crew Cab Dually, 6.4 Diesel Engine, Automatic Trans., 4-Wheel Drive, Michelin Tires, 242,421 Miles (One Owner)

1997 FORD F-250 Extended Cab 7.3 Diesel Engine, Automatic Trans., 2-WD, 233,792 Miles (One Owner)

1995 DODGE 2500 2-WD, 5.0 Cummins Diesel Engine, Automatic Trans., (One Owner)

1999 FORD E-350 15-Passenger Van, V-10 Gas Engine, Automatic Trans., 185,000 Miles

1989 INTERNATIONAL Box Truck, Gas Engine, 5-Spd. Trans., 2-Spd. Axle

2001 FORD MUSTANG 3.8 Litre V-6 Gas Engine, 5-Spd. Trans.

(2) FORD Flatbeds

#### TRAILERS

2018 ITI Chip Trailer, Mdl. SOS 48, Open Top, Manual Roll-Over Tarp

EAST 24' Aluminum Dump Trailer, S/N DSO 662034

Numerous Storage, Van Trailers and Equipment Trailers

#### RECREATIONAL VEHICLES

2013 OPEN RANGE ROAMER 5TH Wheel Goose Neck Mdl. RF367 BHS

2004 CEDAR CREEK SILVERBACK Mdl. 37LBHS, 4 Bunks, 37' with Slide-Out ( ONE OWNER )

1992 PROWLER REGAL Mdl. 29L, 29'

#### RACE CAR (DRAGSTER)

1968 CHEVROLET Camaro, 572 Cubic Inch Fulton Engine, Power Glide Transmission, Strange Axle, Fuel Cell, Twin Fuel Pumps, Electric Water Pump

#### CONSTRUCTION EQUIPMENT

2001 CATERPILLAR TH 83 Telehandler w/Bucket, Forks, Boom Pole, 3192 Hours (One Owner)

CATERPILLAR 416E Loader Backhoe w/Hyd. Thumb, 4-WD, 4552 Hours

JOHN DEERE 750 B Crawler Tractor w/Root Rake, 6-Way Blade

JOHN DEERE 450C Track Loader w/Winch, 3995 Hours, S/N 450CA-356737

FIAT ALLIS 65B Motor Grader, mid Scarifier, Front Blade, 5610 Hours, S/N 68C204040

2002 LEE BOY 8500T Paving Machine, Perkins Engine  
INGRAHM Double Drum Roller, Perkins Engine

# ABSOLUTE RETIREMENT AUCTION

## SATURDAY, SEPTEMBER 21 – 10:00 A.M.



CATERPILLAR 416E LOADER - BACKHOE



2005 FREIGHTLINER BUSINESS CLASS M2 FLATBED



25 PASSENGER HORSE DRAWN STREET TROLLEY

SULLIVAN D185 QV Air Compressor, John Deere Diesel Engine, 2175 Hours, S/N 70214

SULLAIRE 185 Air Compressor, Perkins Diesel Engine, 1638 Hours, S/N 140399

(NEW) PALADIN INDUSTRIAL US 70 Vibratory Screen

SNOW WOLF Ultra Series USP 120 10' Snow Plow, Fits Skid Steer

TENENT 360Floor Sweeper (Propane)

#### GRINDERS & CHIPPERS

MOBARK 1050 Tub Grinder, Morlift 250 w/Knuckleboom, 3406 Cat. Engine, S/N 565-356

WOOD CHUCK Chipper, Ford Inline Gas 300 Engine, 1986 Hours

MAXIGRIND 425 Horizontal Grinder, 3406 Cat. Engine

RAYCO RG 1620 Super Jr. Stump Grinder

HAYBUSTER HD 10 Tub Grinder, John Deere Diesel Engine, 1837 Hours

1994 PACKER Mdl. 750 Debris Grinder, Detroit 24 C Diesel Engine

VERMEER 1600A Wood Chipper, Diesel Engine, 969 Hours

#### (50) WELDERS – MILLER – LINCOLN – HOBART

(9) Miller Dialarc 250 Welders

(6) Hobart Champion Champion 16 Trailer-Mounted Welder

MILLER Bobcat 225 Trailer-Mounted Welder

MILLER Trailblazer Trailer-Mounted Welder

MILLER Big 50 Welder

MILLER Big 40 Welder

(5) MILLER Suitcase X-Treme 12 VS Welders

(2) MILLER 4-Pack CST 280 Welders

LINCOLN V-275-S 4-Pack Welder

(2) MILLERMATIC 130 Welders

MILLER Dimension 650 Welder

MILLER SRH 333 Welder

(2) L-TEC 650 Welders

HOBART Mdl. 400 Welder

MILLER Dialarc HF w/Miller Coolmate 3 w/ Miller Mdl RFC 234 Welder

LINCOLN Idal Arc 500/500 Welder

(2) HOBART Hefty CC/CV Welders

HOBART Champion Welder

MILLER Plasma Cutter

Pallets of Welding Wire & Welding Rod, Rod Ovens & Welding Supplies

Welding Table – 8'x20'x1 1/4" Top

(32) Welding Carts w/Hose, Torch & Gauges

#### MACHINE SHOP EQUIPMENT

BRIDGEPORT J Head Milling Machine

NORTHERN INDUSTRIAL 7x12 Bandsaw

EDWARDS 50-Ton Jaws IV Hyd. Ironworker

EDWARDS 25-Ton Jaws Jr. Hydraulic Craftsman 7'x12' Bandsaw

JET Bandsaw

CINCINNATI Mdl. 106 5-HP Grinder, 3-Phase

POWERMATIC Mdl. 87 20" Bandsaw w/Blade Welder

TURN-NADO 20" Lathe

CIINCINNATI Bickford Radial Arm Drill

Hydraulic Presses

ENVIRONTECH Refrigerant Recover & Recycle Machine

#### HORSE DRAWN EQUIPMENT

INDEPENDENCE Express Stagecoach, James & Ellis Bullock Custom-Built Stage Coach, Rear Hyd. Brakes

COUNTY LINE COACHES 25-Person Horse Drawn Trolley w/ Tow Bar Attachment

Heavy Duty 2-Horse Farm Cart, Hyd. Drum Brakes

PIONEER Forecart 72 HP Deutz Air-Cooled Diesel Engine, Dual Hydraulics, Live PTO, Hyd. Drum Brakes, 4-Way Evenner, 3-Way & Double Tree, 5.5 Hours



20 X 144 SOUTH BEND TURN-NADO ENGINE LATHE



BRIDGEPORT J-HEAD MILLING MACHINE



RIDGID THREADING EQUIPMENT

#### MISC. EQUIPMENT

INGERSOLL RAND Force 5 Air Tugger, Mdl. FA26 LMLX, S/N MW2140902

INGERSOLL RAND HUL 40 Air Tugger, S/N 39741

(3) RIDGID 535 Threaders

RIDGID 1822 Threading Machine

BEAVER 61 E Threader

(8) RIDGID 460 Tri-Stands

(55) Pipe Stands

FALKER Concrete Saws

GORMAN RUPP 6" Electric Pump w/Disconnect, 35-HP, 460 Volts, 3-Phase - 1,000 GPE

Core Drills

Concrete Saws

Klutch Curb Machine – Hammer Drills – Rock Drills – Jack Hammers – Abrasives – Porta Powers – Large Hyd. Jacks

McKissick Blocks – Hillman Rollers

(50) Beam Clamps – 3-Ton – 10-Ton

(26) Beam Trolleys

(65) Chain Falls – (50) Come-a-Longs

C-Clamps – Air Manifolds

Slings – New Milwaukee Porta Band Saws – DeWalt Grinders – 18-Volt Cordless Air Impact Wrenches – Safety Harness

(3) 40' Werner Extension Ladders

(4) 24' Louisville Extension Ladders

(3) Bishman Mdl. 424B SAV-T-Hoist 7-Ton Air Jacks

(2) Rotunda Brake Lathes

#### STEEL & PIPING

(2) 14" Sch 80 – 90 Degrees

(2) 14" Sch 40 – 90 Degrees

(2) 14" Sch 40 – 45 Degrees

18"x14" T Sch 40

12"x8" T Sch 80

#### REDUCERS

Powell 600 Gate Valve w/Papers

Large Qty. of Stainless Steel Fittings

Pipe Hangers

Weld Neck & Slip-On Flanges

Black Iron Fittings

19 – 50 Ft. W6 X 15 H Beams

40Ft 6X18 I Beams

3 – 50 Ft. 6 X 10 I Beams

## ROAD TRACTORS – DUMP TRUCKS – CONSTRUCTION EQUIPMENT WELDERS – TOOLS – HORSE-DRAWN EQUIPMENT – RACE CAR

### INSPECTION: FRIDAY, SEPTEMBER 20TH FROM 10AM-4PM

TERMS: 10% Buyer's Premium Onsite / 12% Buyer's Premium Online

All Bidders must register and provide proper identification. All items sold "As Is Where Is" without warranty of any kind, expressed or implied. All items sell to the highest bidder with no minimum or reserve. All purchases must be paid for in full within one hour of the close of the auction on the day of the sale by US funds via cash, cashier's check or certified check. All company or personal checks MUST BE ACCOMPANIED BY A LETTER FROM YOUR BANK guaranteeing payment of your check dated for this auction. NO EXCEPTIONS. We cannot accept your check without this letter. Credit cards accepted with an additional 3% service fee. Buyer's Premium will be added to all high bids to determine sale price. 7% Sales Tax will be collected unless a Resale or Agricultural Exemption Certificate is provided at time of payment.

**DISCLAIMER:** Although every effort has been made to present the information contained herein clearly and accurately, please keep in mind that this brochure is only a guide. The Auction Company and its authorities make no guarantees or warranties, expressed or implied. Please make your own inspections. ALL SALES ARE FINAL. NOT RESPONSIBLE FOR ACCIDENTS.

CAN'T MAKE IT TO THE AUCTION? BID ON PROXIBID, BIDSPOTTER OR EQUIPMENTFACTS

proxibid BidSpotter Equipmentfacts

www.bidkingauctions.com • (800) 359-5608

**KING**  
AUCTION & REALTY CO., Inc.

ANCHOR STEAM POWER CO., INC., 80 AZALEA ROAD E., ASHEVILLE, NC

**KING**  
AUCTION & REALTY CO., Inc.

JERRY KING • 828-230-7075  
NC FIRM LIC. #7551

LIVE & ONLINE